

# Poverty Reduction Canadian Highlights

Aisling Gogan, Assistant Deputy Minister  
Department of Children, Seniors and Social Development

**May 29, 2019**



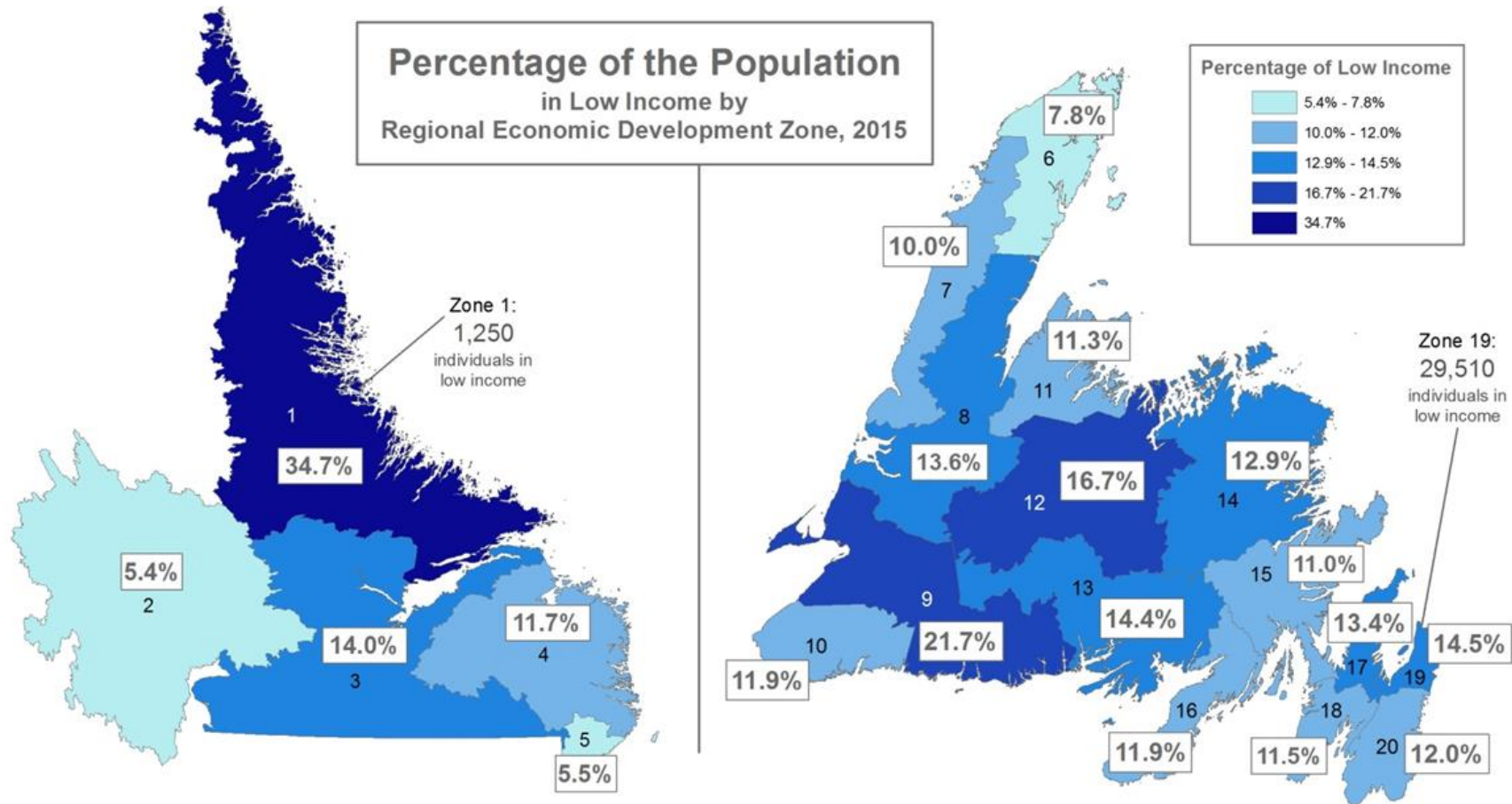
## Best/Promising Practices in areas highlighted in consultations

- Evidence/Data
- Mental Health and Addictions
- Housing and Homelessness Prevention
- Transportation
- Food Security

## Evidence: Market Basket Measure (MBM) Approach

- Compares household income to cost of a basket of goods and services – MBM now Canada's Official Poverty Line
- Newfoundland and Labrador Market Basket Measure (NLMBM) - Same definition and similar methodology, but basket costed at community level and uses income tax data
  - not based on a sample – allows for community-level and sub-population analysis

# Regional and Community Level Data



Source: Newfoundland and Labrador Statistics Agency, Government of Newfoundland and Labrador

# Evidence: Identification of Vulnerable Populations

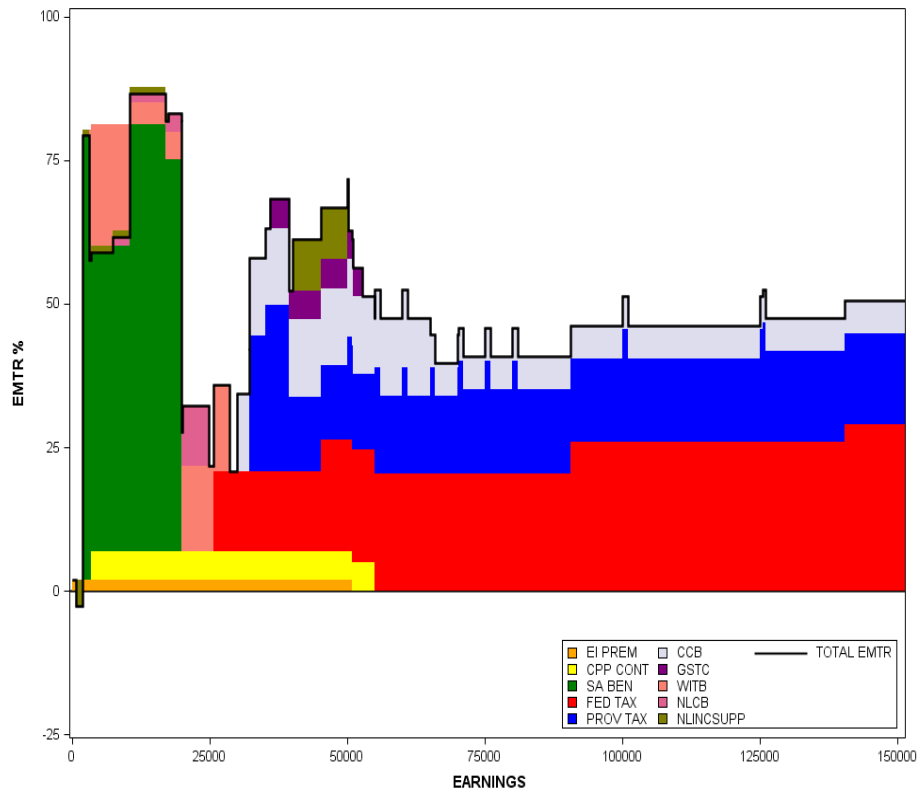
- Seniors in extreme low income:
  - Identified 400 seniors in extreme low income
  - How is this possible given OAS/GIS?
  - Qualitative research discovered clawing back of federal benefits
  - Working on solutions with federal counterparts
- Youth (16 & 17) in extreme low income:
  - Shows impact on youth without parent or guardian not being able to receive child benefits

## Evidence: Effective Marginal Tax Rates (EMTRs)

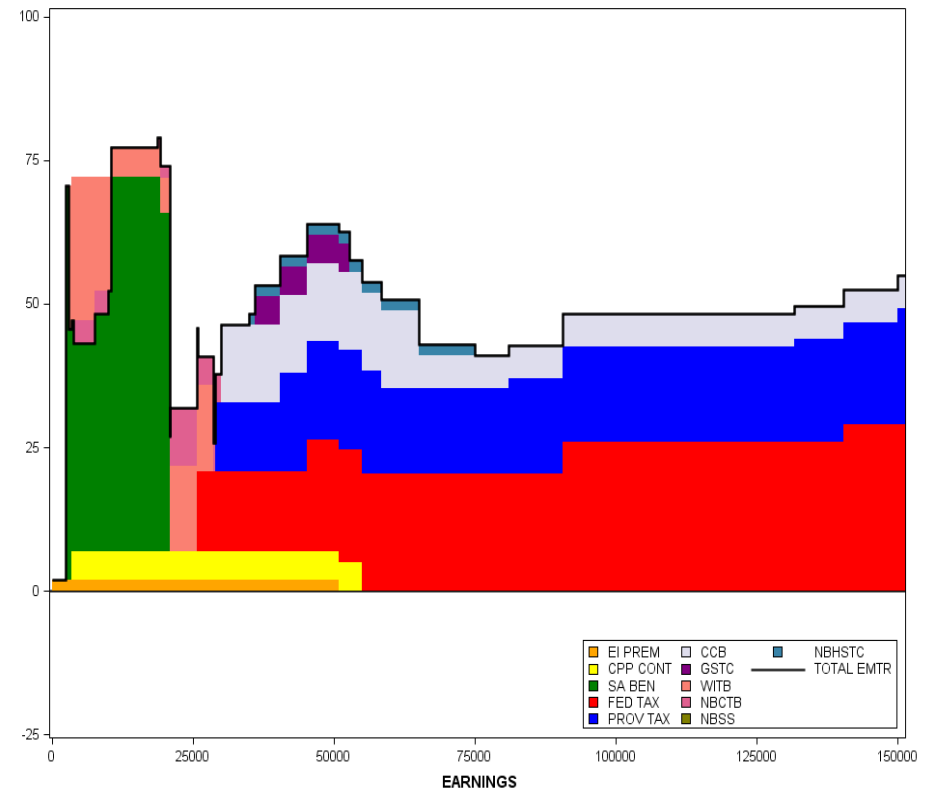
- Interaction between programs, including the income tax system, is complex
- EMTRs describe the “take-home” share of last dollar earned
- EMTRs are the rate of direct taxes combined with the rate at which income-tested credits and benefits are withdrawn, as earnings increase

# EMTR 1 Earner Couple, 2 Children; Receiving SA (2016)

## Newfoundland & Labrador



## New Brunswick



Source: Strategic and Service Policy Branch of Employment and Social Development Canada

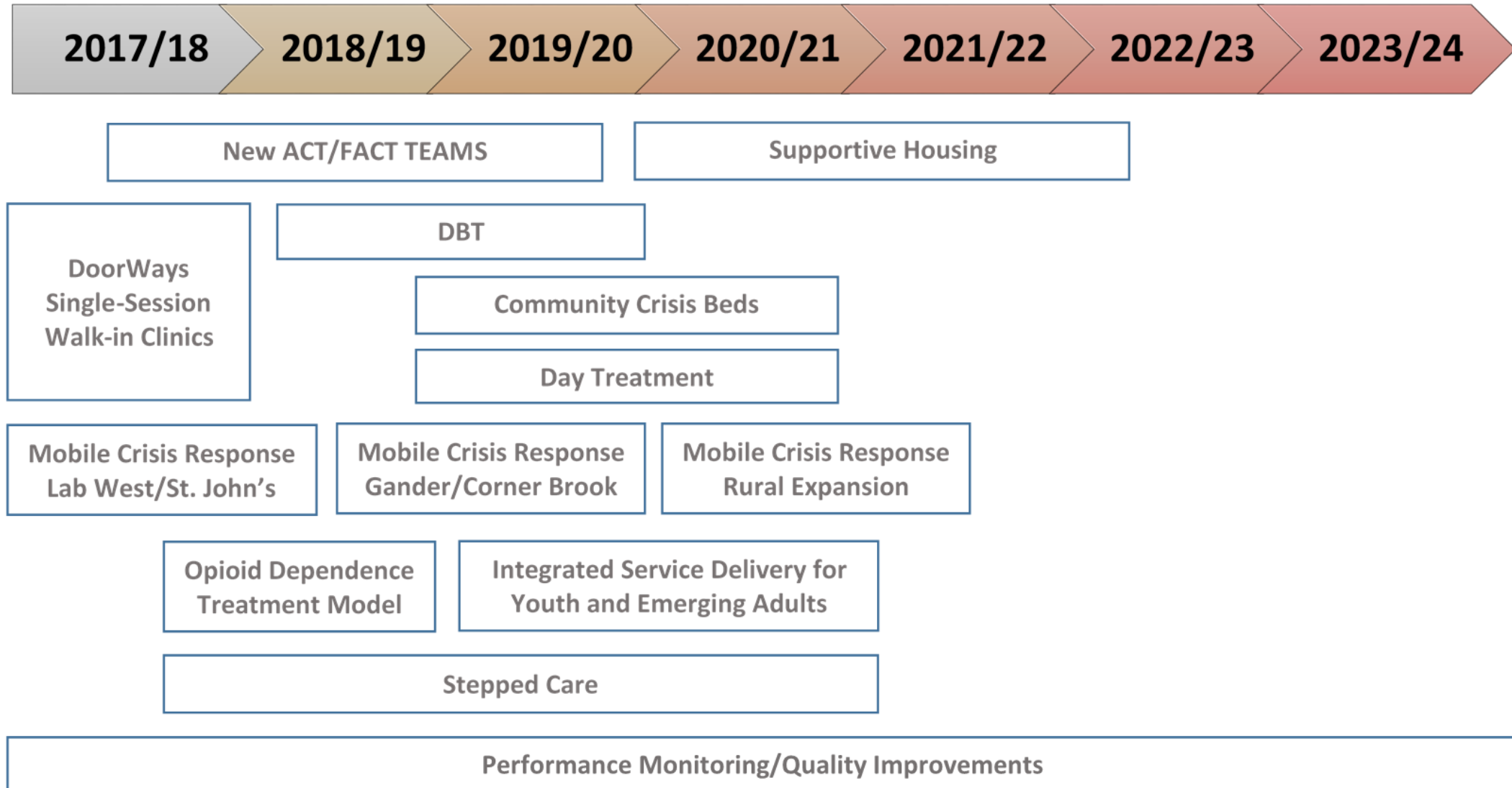


# Mental Health: NL's Towards Recovery Action Plan

## All-Party Committee Recommendations

- Provide all young families with access to parenting programs that build protective factors
- Implement Social and Emotional Learning (SEL) curriculum for K-8
- Replace Waterford with combination of beds and community services
- Using a stepped-care approach, offer a range of services throughout the province

## New Community Services



# Towards Recovery: Highlights

- 68 per cent reduction in people waiting for counselling services
- Walk in clinics in over 50 locations province wide
- New suite of E-Mental Health options available
- Mobile crisis response in Lab City, St. John's, Corner Brook and coming to a number of rural communities this year
- Opioid dependence treatment hubs in 5 locations

# Towards Recovery: Current Priorities

- Implement SEL curriculum in K-12 provincially, beginning with earlier grades in September 2019 (EECD)
- Develop universal programs for new and young families to foster resiliency and build protective factors (CSSD)
- Release provincial action plans for suicide prevention and alcohol use (HCS/CSSD)
- Transfer responsibility for health services for inmates from Justice and Public Safety to HCS (JPS/HCS)

# Housing and Homelessness

- A “housing first” approach to service delivery in general with specific consideration for individuals with complex needs
- An eviction prevention framework
- Portable rent supplement
- Ensuring individuals discharged from correctional facilities have proper identification
- Ensuring people have identification when being released from correctional facilities

# Transportation

## Key to Social Inclusion

- BC – investments in affordable transportation for both urban and rural communities
- NS – free bus passes to people receiving Income Assistance in great Halifax area
- NL – Community Transportation Program

# Food Security

- Evidence that shows increasing incomes, particularly for those receiving social assistance, increases food security
- Community-led community freezer, garden and hunting programs are showing success in Indigenous communities
- Bulk buying and community kitchen and garden programs successful in contributing to food security, as well as social inclusion, community-attachment and increasing wellness

# Questions/Discussion

